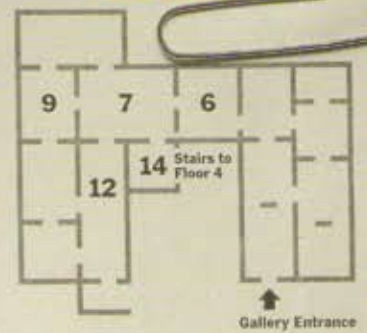


# Ford Family Activity Guide

Floor 5



The Museum of Modern Art

## Jean Shin Travel Journal



I'm an artist who lives and works in Brooklyn, New York. My art installations reflect on how people relate to cast-off materials, like clothing, prescription pill bottles, and computer keyboards. Whether I'm traveling far away or just around the corner from my studio, I take lots of photographs to record my experiences.

I have found many visual connections between my photos and works of art at MoMA. Use the clues and photographs in this travel journal to find works and make your own connections. When you're done, pop out the photos as souvenirs of your visit and as inspiration to keep looking at art in the everyday...

— Jean Shin

## TURNING HEADS GO TO GALLERY 6



First Family Activity Guide, The Museum of Modern Art

© 2006 Jean Shin

"I sculpted as a painter. I did not sculpt like a sculptor. Sculpture does not say what painting says. Painting does not say what sculpture says."

—Henri Matisse

In China many stores have long rows of mannequins displaying clothes at their entrances. Although they look similar, each mannequin is slightly different from the next. How funny to see a woman stand next to these life-sized dolls, unaware that she is posing like them!

### YOUR TURN

Look for 5 bronze heads. What differences do you notice among the heads—especially between the first and the last? Imagine what the next head would look like.

### DRAW IT

Draw a picture of your own face. Then draw it again, exaggerating your features.

|  |  |
|--|--|
|  |  |
|--|--|

## ANIMAL SHAPES GO TO GALLERY 14

### YOUR TURN

Look for a large sculpture made out of blue-gray marble that is based on the form of a fish.

### DRAW IT

Draw a picture of your favorite animal using only simple shapes like circles, squares, and triangles.

Very early one morning I saw gigantic tuna being sold in Tokyo's fish market. Lying frozen on the ground, the tuna looked less like fish and more like heavy stone or solid steel.



Ford Family Archive's Guide, The Museum of Modern Art

© 2006 Jean Shin

"Simplicity is not an end in art, but we usually arrive at simplicity as we approach the true sense of things."

--Constantin Brancusi

## IMAGINARY CITY GO TO GALLERY 7



Ford Family Activity Guide, The Museum of Modern Art

© 2005, Jean Shin

"To be really immortal, a work of art must go completely beyond the limits of the human: good sense and logic will be missing from it."

---Giorgio de Chirico

In New York City, you can find the most interesting things left on the street for others to take. I came across a colorful collection of clothes hung on the fence in front of a church. I wondered how long the clothes would remain there before someone took them. Perhaps one day the first owner and the new owner will walk past each other and feel as if they had met before in a dream.

### YOUR TURN

Look for a painting that shows the head of a statue, a green ball, and a red glove displayed outside in a city.

### DRAW IT

Draw an imaginary city around 3 objects: a fork, a shoe, and an umbrella.

## NATURE REVEALED GO TO GALLERY 9

### YOUR TURN

Look for a large, room-size painting of flowers and plant forms floating in water. Stand back from the painting. What do you see in the water's reflection? How does the painting look different as you walk closer to it?

### DRAW IT

Pick your favorite part of this painting and look at it closely. How do you think the artist's hand moved as he painted it? Try drawing with the same movements.

The wind blows through the palaces of Beijing, moving the pine branches. Over time, the branches have worn away paint on the wall. The invisible element of wind reveals itself by leaving its mark on the architecture - nature's way of erasing.



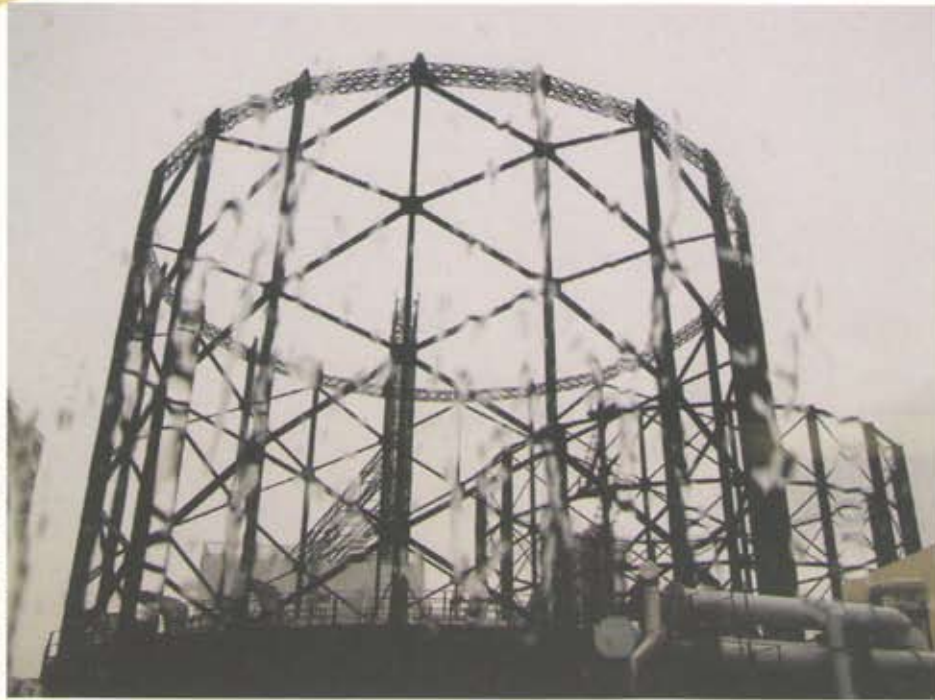
Ford Family Activity Guide, The Museum of Modern Art

© 2006 Jean Shin

"For me, a landscape does not exist in its own right, since its appearance changes at every moment; but the surrounding atmosphere brings it to life-- the light and the air which vary continually."

---Claude Monet

# SKELETAL STRUCTURES GO TO GALLERY 12



Ford Family Activity Guide, The Museum of Modern Art

© 2006 Jean Shin

"We constructed a fantastical palace in the night--a very fragile palace of matches. At the least false movement a whole section would collapse. We always begin it again."

--Alberto Giacometti

*In Hong Kong, heavy raindrops falling on the car window distorted my view of this steel structure, making its shape fluid and blunny, as if in a dream. It looks like a frail skeleton - haunting and empty.*

## YOUR TURN

Find a sculpture that looks like a house constructed out of thin wooden sticks. What do you think is happening inside this house?

## DRAW IT

Look around this gallery. Imagine it at night, without any people.

Draw a picture of it.



Need a hint? Look for The Palace at 4 A.M. by Alberto Giacometti.

© 2006 The Museum of Modern Art

# Ford Family Activity Guide

## JEAN SHIN: TRAVEL JOURNAL

I'm an artist who lives and works in Brooklyn, New York. My art installations reflect on how people relate to cast-off materials, like clothing, umbrellas, and lottery tickets. Whether I'm travelling far away or just around the corner from my studio, I take lots of photographs to record my experiences.

I have found many visual connections between my photos and works of art at MoMA. Use the clues and photographs in this scrapbook to find works and make your own connections. When you're done, pop out the photos as souvenirs of your visit and as inspiration to keep looking for art in the everyday.



## THE JOURNEY BEGINS GALLERY 21

Whenever I fly somewhere, I photograph the cloud formations outside the airplane window. The clouds change so quickly, like fleeting, abstract drawings. The clouds suggest a white landscape that is always changing, revealing and hiding what is underneath.



Ford Family Activity Guide, The Museum of Modern Art

© Jean Shin 2005

### YOUR TURN

Look for a painting that resembles clouds. Beneath the thick white clumps, there is a thin layer of grey-blue paint, like the ocean peeking through the clouds.

Look for other artworks in this gallery that are white. Can you find works that appear to be...

- Furry
- Prickly
- Sticky
- Fragile
- Wet
- Dangerous

"Become part of your environment. Forget yourself."

—Yayoi Kusama

## THINGS BROKEN MADE BEAUTIFUL GALLERY 21



Ford Family Activity Guide, The Museum of Modern Art

© Jean Shin 2006

"I wasn't interested  
in the car parts...  
I believe that common  
materials are the  
best materials."

—John  
Chamberlain

This photograph shows broken pottery found in a Korean Village that specialized in celadon ceramics, which have a greenish-brown glaze. If a piece of pottery is not perfect, the potter destroys it. Broken things can be beautiful. How moving to be surrounded by imperfect fragments that fill the landscape - empty vessels that will never be filled....

### YOUR TURN

Some broken objects can be very powerful. Look for a colorful, crushed artwork.

### DRAW IT

This sculpture is made from broken car parts. Pick one piece of painted metal and imagine the car it came from.

Draw a picture of what the car might have looked like.



## INNER SPACE GALLERY 21

### YOUR TURN

Can you find an artwork that reminds you of a cave or volcano?

### DRAW IT

If you could go into this artwork, where do you think the hole would lead? Draw what you think you would find at the other end.

In Japan, there is a bronze statue of Buddha that is unique because you can walk inside. It is very unusual to enter a sacred space of this kind, to experience the space within the body of the Buddha. Once inside, you can look up into the dark, empty space inside the statue's head. It's a void you cannot enter. You can only imagine what's there.



Ford Family Activity Guide, The Museum of Modern Art



© Jean Shin 2006

"I like space that never stops. Black is like that. Holes and boxes mean secrets and shelter."

--Lee Bontecou



Food Family Activity Guide, The Museum of Modern Art

© Jani Shin, 2006

"I used to have the same lunch every day, for twenty years, I guess, the same thing over and over again."

—Andy Warhol

I came across a small corner store in Harlem where the products for sale were tightly displayed in the window. From outside, the toothpaste boxes looked like a bright patterned advertisement for fresh, clean smiles.

YOUR TURN

Artist Andy Warhol was inspired by packaging and advertisements for cleaning supplies and food, including his favorite lunch food. Can you find what Andy Warhol ate for lunch?

DRAW IT

Try designing an advertisement for your favorite kind of snack. Can you repeat it again and again to include a variety of flavors?

|  |  |
|--|--|
|  |  |
|  |  |

## EXTRA SMALL/EXTRA LARGE GALLERY 23

### DRAW IT

Claes Oldenburg transformed small, everyday objects into very large sculptures.

What if an object the size of your hand was so big you could walk around it?

Draw a picture of yourself standing next to it.

### YOUR TURN

Can you find a sculpture that is soft like a mattress but sweet like a dessert?

Walking down the streets of New York City, I found an abandoned mattress. It seems vulnerable outside, stripped of its comforts. Such a stark contrast between the aqua-colored mattress and the hard, cold, grey concrete sidewalk. I wonder who slept on this bed. I imagine someone dreaming and rolling over.



From Family Activity Guide, The Museum of Modern Art

© Alan Stein 2006

"I try to look at things as if I had never seen them before--as if I were a Martian and didn't know what they were for."

--Claes Oldenburg

## OLD THINGS MADE NEW GALLERY 23



Ford Family Activity Guide, The Museum of Modern Art

© Juan Shen 2006

"I try to show that when some things are taken out of the usual context and put in the new, they are given an entirely new character."

--Romare Bearden

On a rocky mountain-side in China, I saw these beautifully patterned quilts placed outside to air. It looked as though someone had painted the rocks with brilliant colors. Each quilt belongs to a different person. Placed together they felt like a family portrait.

### YOUR TURN

Can you find an image of a woman in her bed? It is made from scraps of many different fabrics.

### DRAW IT

Pick your favorite patch of fabric in the work. Imagine what this fabric was originally used for--a dress, shirt, blanket, or tablecloth?

Draw a picture of it.

